

CITY OF NORTH BAY

ROTARY PLAYGROUND

CONCEPTUAL SITE MASTER PLAN NO.3



trace

NATURAL ENVIRONMENTS | BUILT ENVIRONMENTS

CITY OF NORTH BAY

ROTARY PLAY GROUND

TABLE OF CONTENTS

The City of North Bay developed this play ground master plan to propose a creative and multi-generational and central recreational gathering grounds for all city residents, and guests.

1.0	DESIGN CONTEXT	PAGE No.3
2.0	THE BUBBLES AND LINES	PAGE No.4
3.0	PLAYPARK MASTER PLAN	PAGE No.5

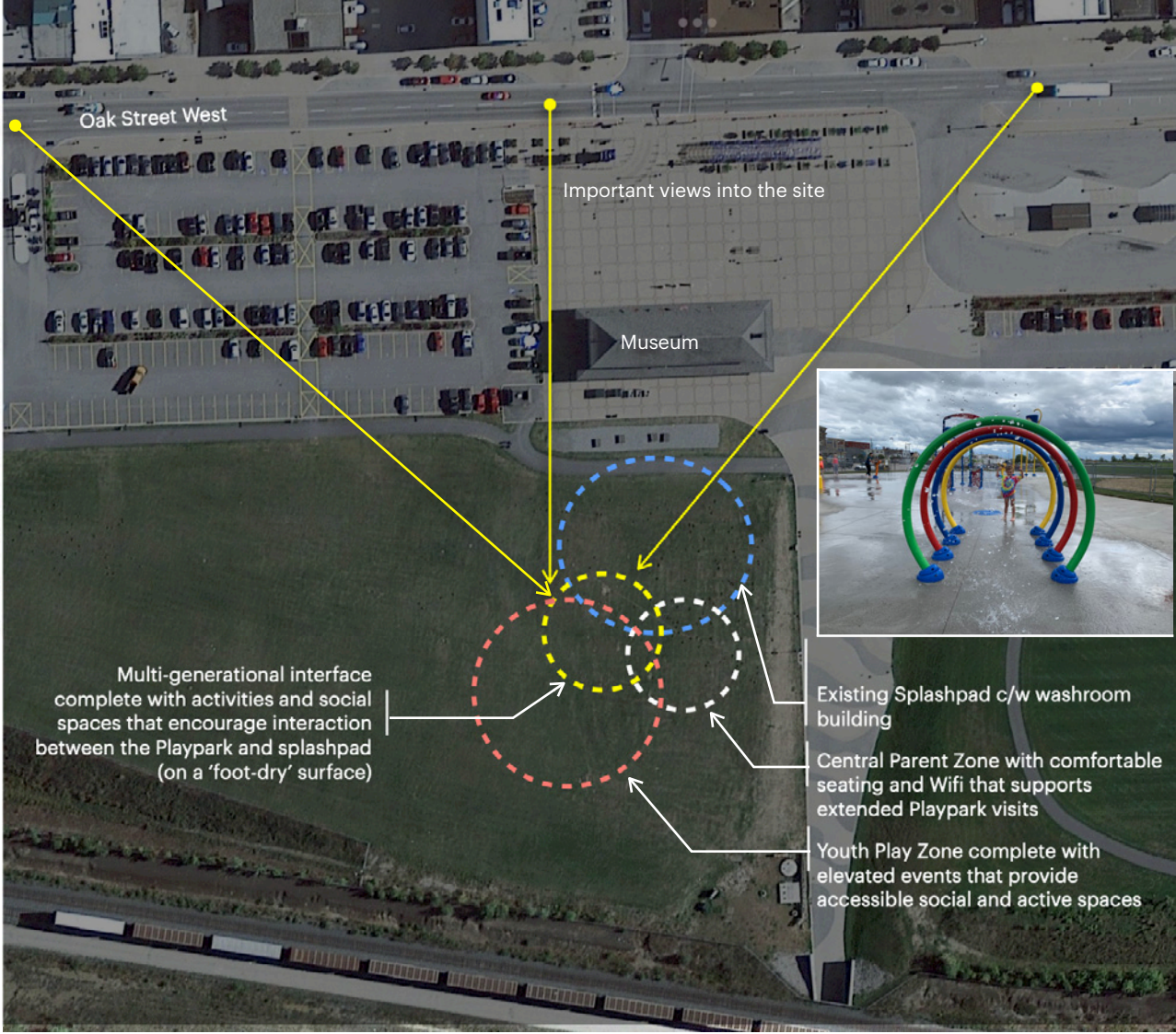


1.0 DESIGN CONTEXT

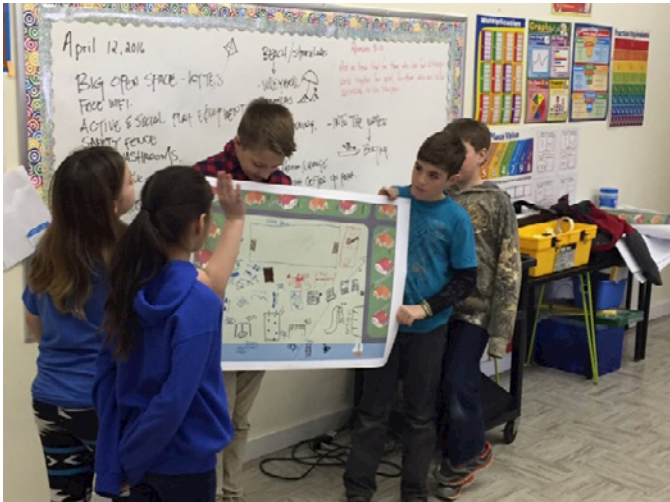
The Rotary Playpark in influenced by two important elements of site programming. First, the previously developed splashpad provides a great position to launch into a major park development from.

Second, the site is the cultural and physical heart of the city, and any play park located on this site should be as great as its position.

The adjacent image illustrates the proposed site layout relative to the desired activities, and their relationship to view planes and pedestrian routes into the site.

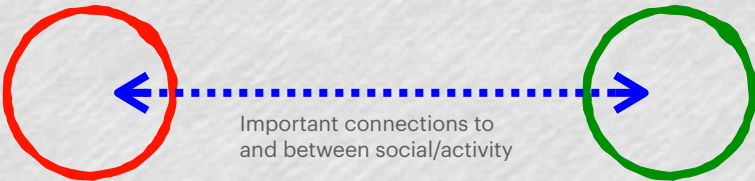


The City of North Bay Parks Master Plan utilized an extensive community engagement process that clearly dictated how the park should evolve over the next 20 years.



2.0 BUBBLES AND LINES

What are the bubbles and lines?



Social space created for gathering people together within close context of adjacent activity

Activity space created as focal point for multi-generational gathering and play

Logging boat themed multi-generation activity zone with seating, climbing, sliding and group swinging.

Playpark themed as celebration for Lake Nipissing. The lighthouse and logging boat are celebrated and interpreted

Lighthouse Activity Zone for sr. youth complete with play durable play structures and ground events

Social pavilion complete with conversational seating and shade.

Existing splashed site with existing washroom building.

Museum

3.0 MASTER PLAN

ROTARY PLAY
GROUND



1. Central Social Zone (c/w shade, seating, planting, wifi, uplighting & tots play area within close proximity of parents).
2. Entry plaza with seating area.
3. Youth play zone.
4. Thematic multi-generational play event (boat).
5. Existing structure splashpad.

CITY OF NORTH BAY
**ROTARY PLAY
GROUND**



CITY OF NORTH BAY
**ROTARY PLAY
GROUND**



ROTARY PLAY GROUND



CITY OF NORTH BAY

ROTARY PLAY GROUND



CITY OF NORTH BAY

ROTARY PLAY GROUND



CITY OF NORTH BAY

ROTARY PLAY GROUND

